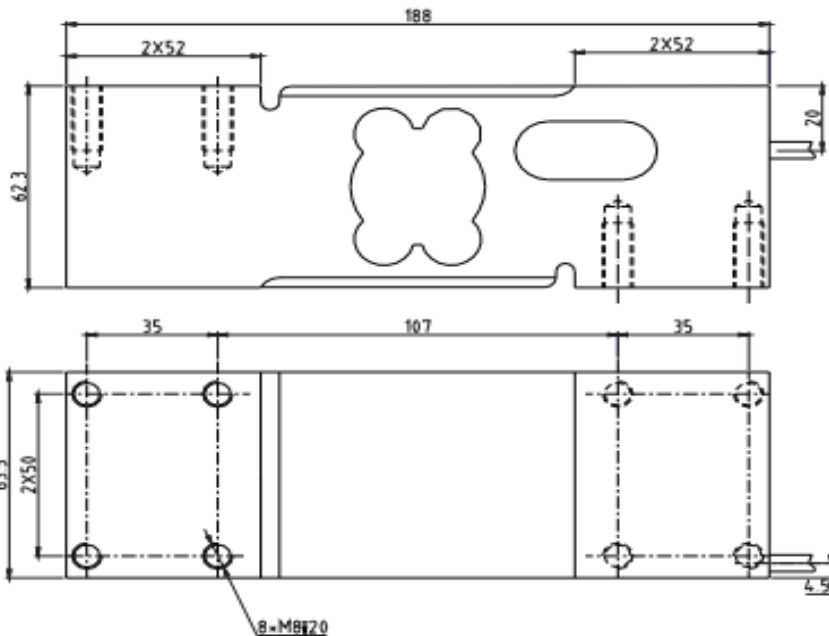
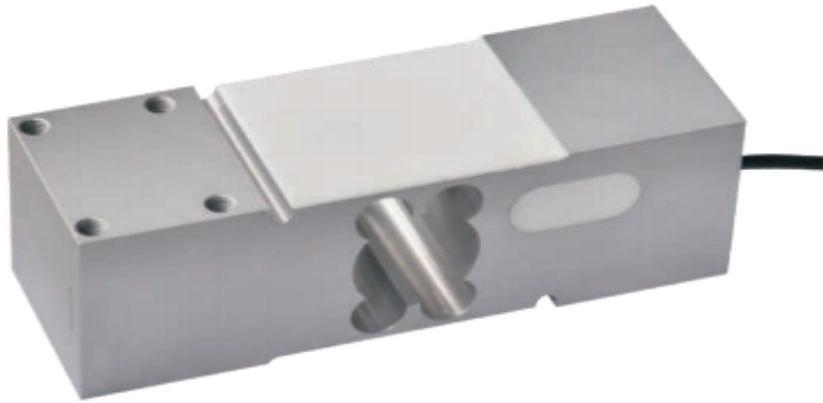


## Singlepoint opnemer WA-56

Deze aluminium singlepoint krachtopnemer is goed op gebied van compressie testen.



Platform scale, compression testing situations

### TECHNICAL PARAMETER

OAP version 4Wires:Exc+(Blue);Exc-(Black);Sig+(White);Sig-(Red)

|                                     |  |                                  |                      |
|-------------------------------------|--|----------------------------------|----------------------|
| Rated capacities(E <sub>max</sub> ) | 50,75,100,150,200,250,300,500,635,750,800kg;1t | Temperature range, compensated   | -10°C~+40°C          |
| Sensitivity                         | 2.0 ± 0.2mV/V                                  | Temperature range, operating     | -20°C~+50°C          |
| Accuracy class                      | OIML C3  | Maximum safe overload            | 150%E <sub>max</sub> |
| Creep error (30min)                 | ± 166ppm                                       | Ultimate overload                | 300%E <sub>max</sub> |
| Zero balance                        | ± 3%E <sub>max</sub>                           | Excitation, recommended          | 10V DC               |
| TC ZERO                             | ± 17.5ppm/°C                                   | Excitation, maximum              | 15V DC               |
| TC SPAN                             | +20°C~+40°C, ± 17.5ppm/°C                      | Protection class                 | IP65                 |
|                                     | -10°C~+20°C, ± 11.67ppm/°C                     | Construction                     | Aluminium            |
| Input resistance                    | 404 ± 15Ω                                      | Cable                            | Length:1.8m          |
| Output resistance                   | 350 ± 3Ω                                       |                                  | Diameter: φ 5mm      |
| Insulation resistance               | ≥ 2000 MΩ (50V DC)                             | Installation torque, recommended | 25N · m              |
| Max platform size                   | 600 × 800mm                                    |                                  |                      |